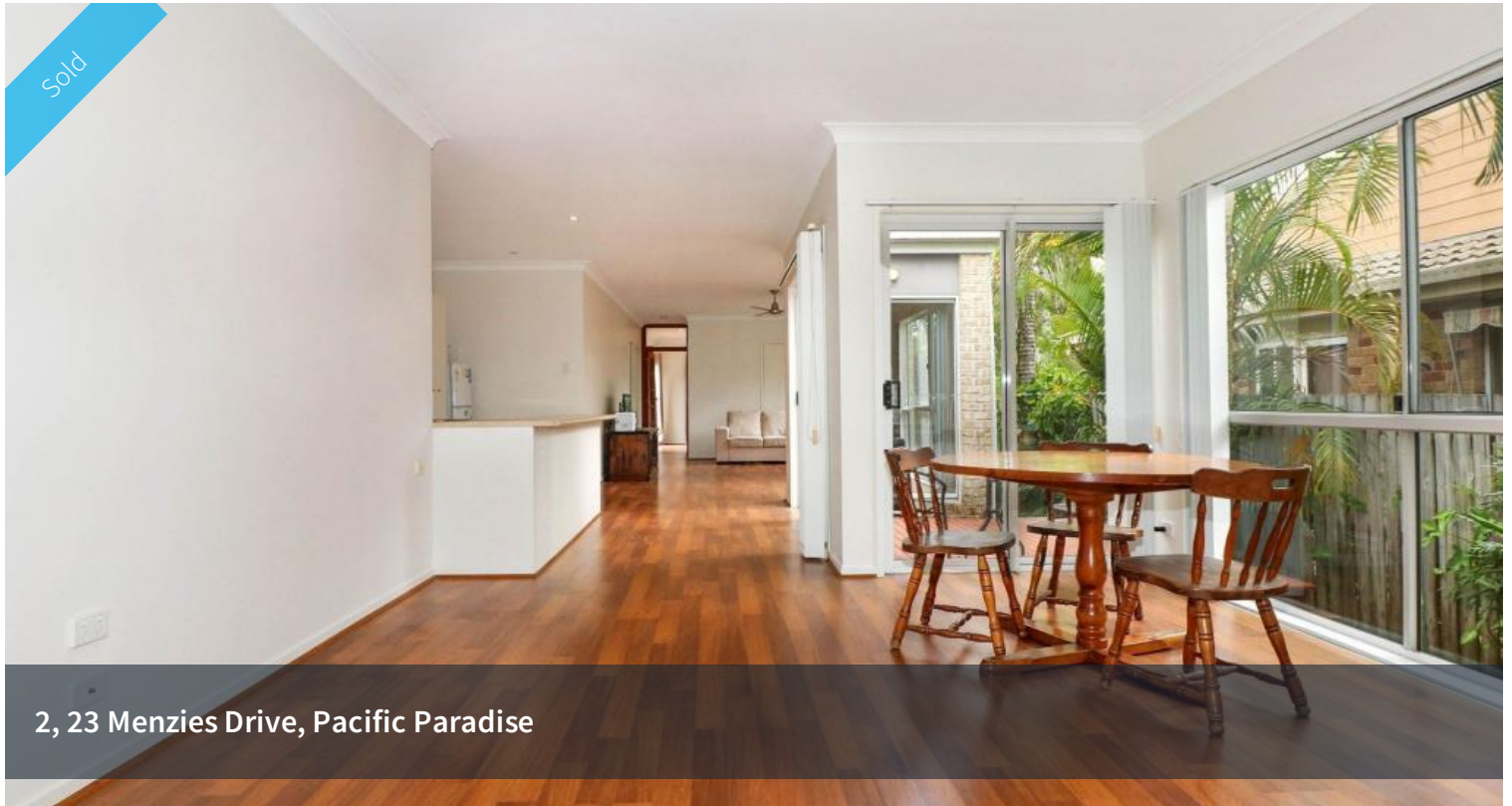


Sold



2, 23 Menzies Drive, Pacific Paradise



Oversized duplex, heart of the village

Designed with lifestyle in mind this duplex was one of the last to be built in the area and still offers valuable unique features that make the most of the land and location. Larger rooms, more living options and off street parking for two vehicles is just the beginning.

- 2 bedrooms, 2 bathrooms, large open plan living
- Connecting deck area and internal lock up garage
- Enough floor space for house size furniture/storage
- High ceilings add a sense of extra space throughout
- Very private setting. Fenced, low maintenance gardens
- Cross street to shops, school, medical & day-care
- Tavern and cafes all within a few minutes walk
- Off street parking for a second vehicle or caravan
- Self managed/no outside body corporate company
- Low fees and a high level of control
- Closer size to a house than a unit
- Easy investment property or care free home
- Tenant in place at \$340pw until June 2019

🛏 2 📶 2 🚗 1

Price	SOLD
Property Type	Residential
Property ID	2833

Agent Details

Tony Brown - 0411074022

Office Details

Maroochy North Shore Realty
644 David Low Way Pacific Paradise,
QLD, 4564 Australia
07 5448 7700



Situated in the same street as the school, shops and medical centre means

everything you need is close at hand. 10 minute cycle to Mudjimba's patrolled surf beach and the same time in the car to Maroochydore CBD and Sunshine Plaza.

Investment information:

Current permanent rental return: \$340pw (Leased until June 2019)

Rates & Water: Approx. \$2950/year

Building insurance (no outside body corporate) approx \$850/year

The above information provided has been furnished to us by the vendor/s. We have not verified whether or not that information is accurate and do not have any belief in one way or the other in its accuracy. We do not accept any responsibility to any person for its accuracy and do no more than pass it on. All interested parties should make and rely upon their own inquiries in order to determine whether or not this information is in fact accurate.