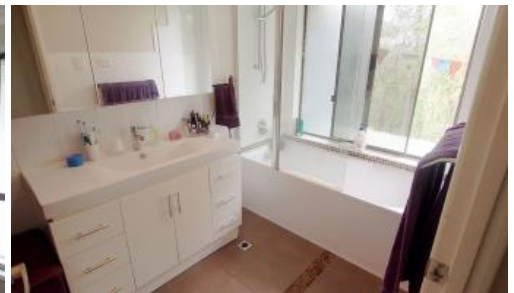




27 Atkinson Road, Bli Bli



## Mountain views & room to move

Sweeping hinterland views, plenty of floor space and a flexible layout to suit the biggest family or a home based business. Ready to provide a comfortable lifestyle now and options to add more value in the future.

- Large connecting indoor and outdoor living
- Stone countertops & ergonomic fittings to kitchen
- Dishwasher and plumbed in ice making fridge inc
- Fully insulated outdoor deck/entertainment area
- Excellent views of the hinterland from most rooms
- 3 beds upstairs and two more rooms downstairs
- One downstairs room large enough for family/rumpus
- Lower level virtually self contained (internal stairs)
- Garage and work shop under house, 2 x carport
- Side access for a trailer into the yard
- Low maintenance 1045sqm block (1/4 acre)
- 6kl water tank. Garage converted to office space
- 13km to the patrolled surf beach & esplanade
- 12 min drive to Sunshine Plaza. 5 mins Nambour

🛏 3 🚿 2 🚗 3 📏 1,045 m2

<b>Price</b>	SOLD
<b>Property Type</b>	Residential
<b>Property ID</b>	1669
<b>Land Area</b>	1,045 m2
<b>Floor Area</b>	222.96 m2

### Agent Details

Tony Brown - 0411074022

### Office Details

Maroochy North Shore Realty  
644 David Low Way Pacific Paradise,  
QLD, 4564 Australia  
07 5448 7700



A quarter acre gives you separation and privacy from neighbours. Backing onto a

larger farm gives this property an acreage feel without the work that normally goes along with it. Views and privacy this close to town mean you can escape when you need to, and everything is still within easy reach.

Investment information:

Estimated Permanent Rental Return: \$480/week

Rates & Water: Approx. \$3650/year

The above information provided has been furnished to us by the vendor/s. We have not verified whether or not that information is accurate and do not have any belief in one way or the other in its accuracy. We do not accept any responsibility to any person for its accuracy and do no more than pass it on. All interested parties should make and rely upon their own inquiries in order to determine whether or not this information is in fact accurate.